

Common Core Math Results & Options

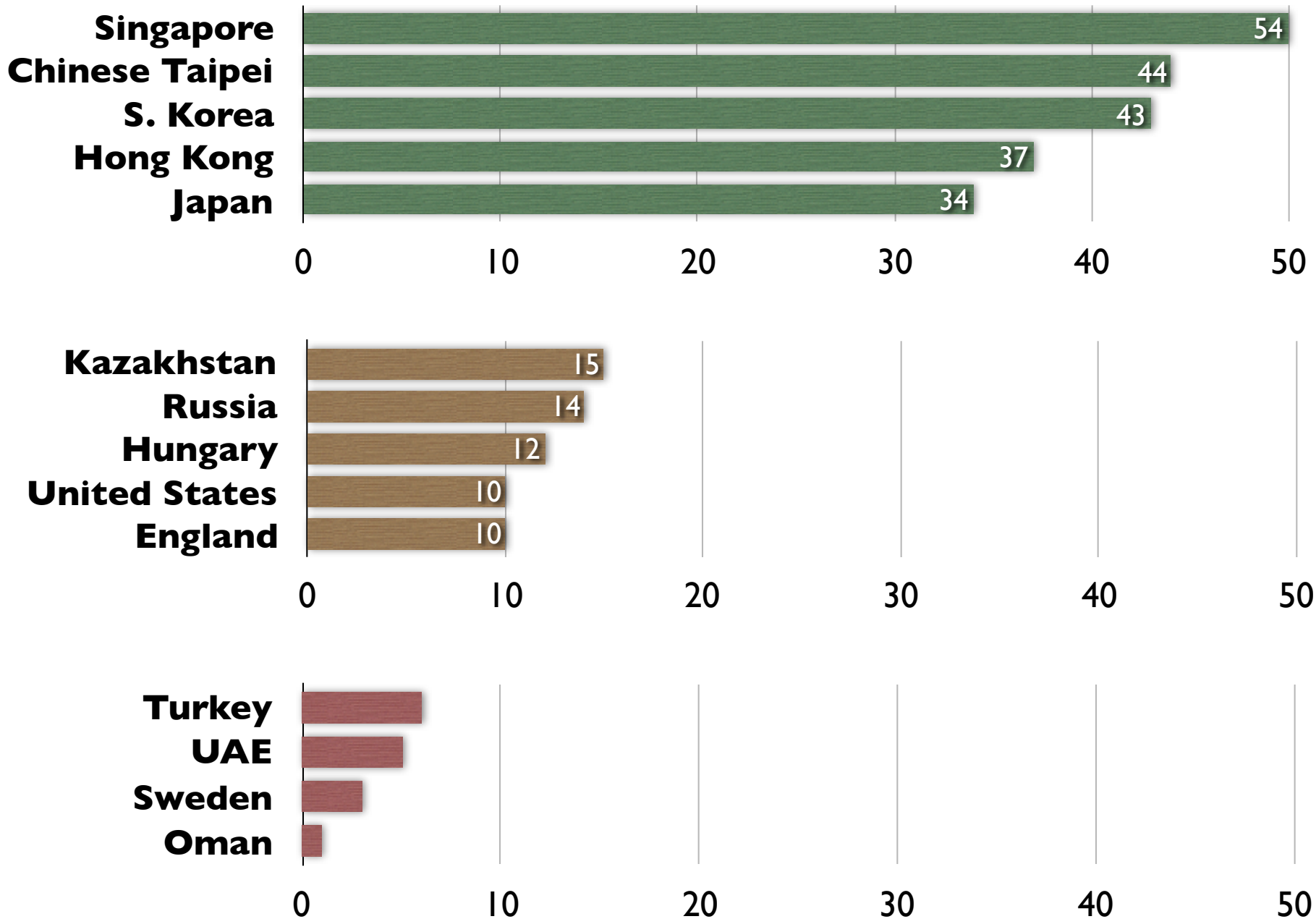
Alabama

Theodor Rebarber
AccountabilityWorks

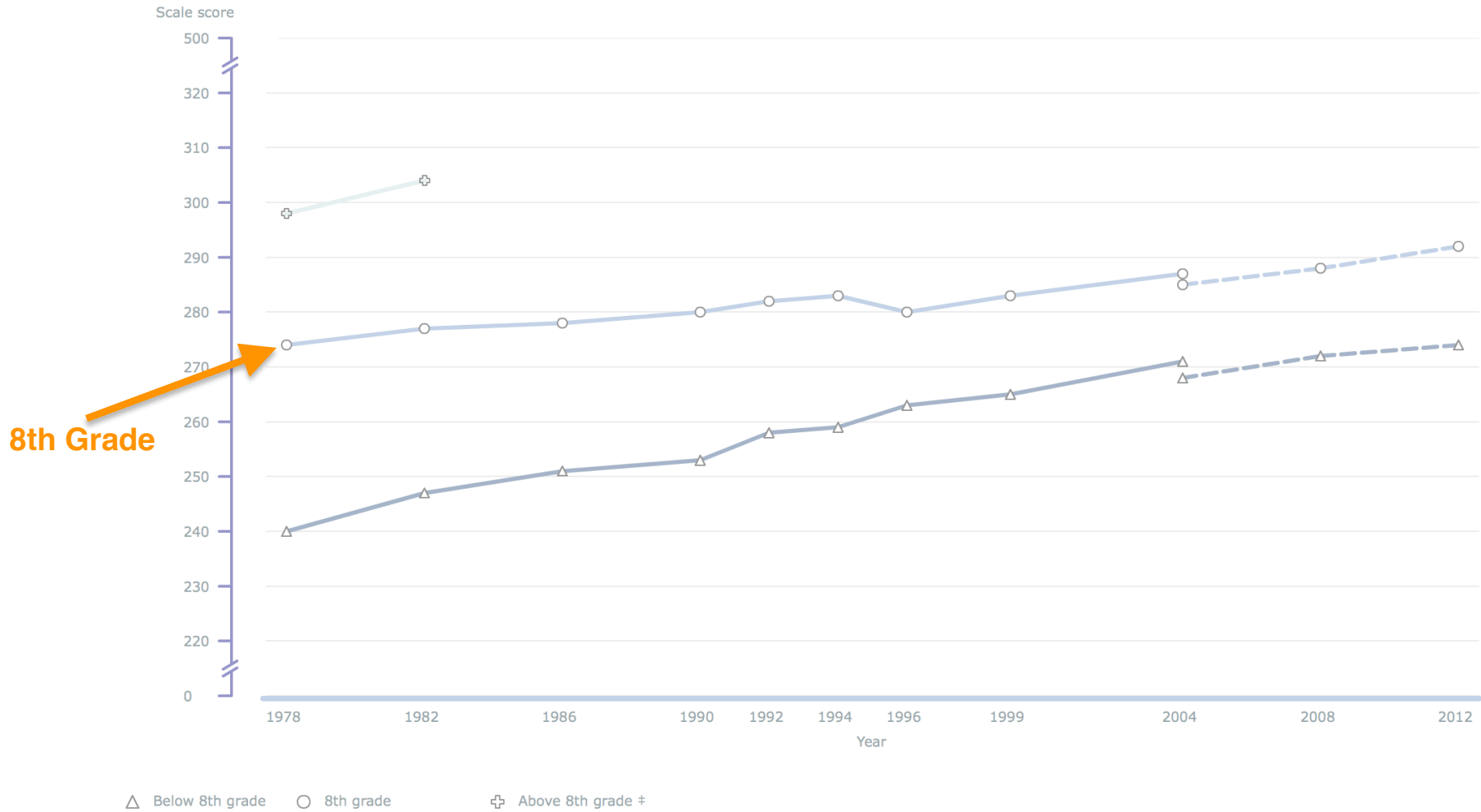
February 2019

TIMSS Gr8 % of Students Attaining Math “Advanced” Level (2015)

(Solid Foundation for Math-Based, Post-Secondary STEM)

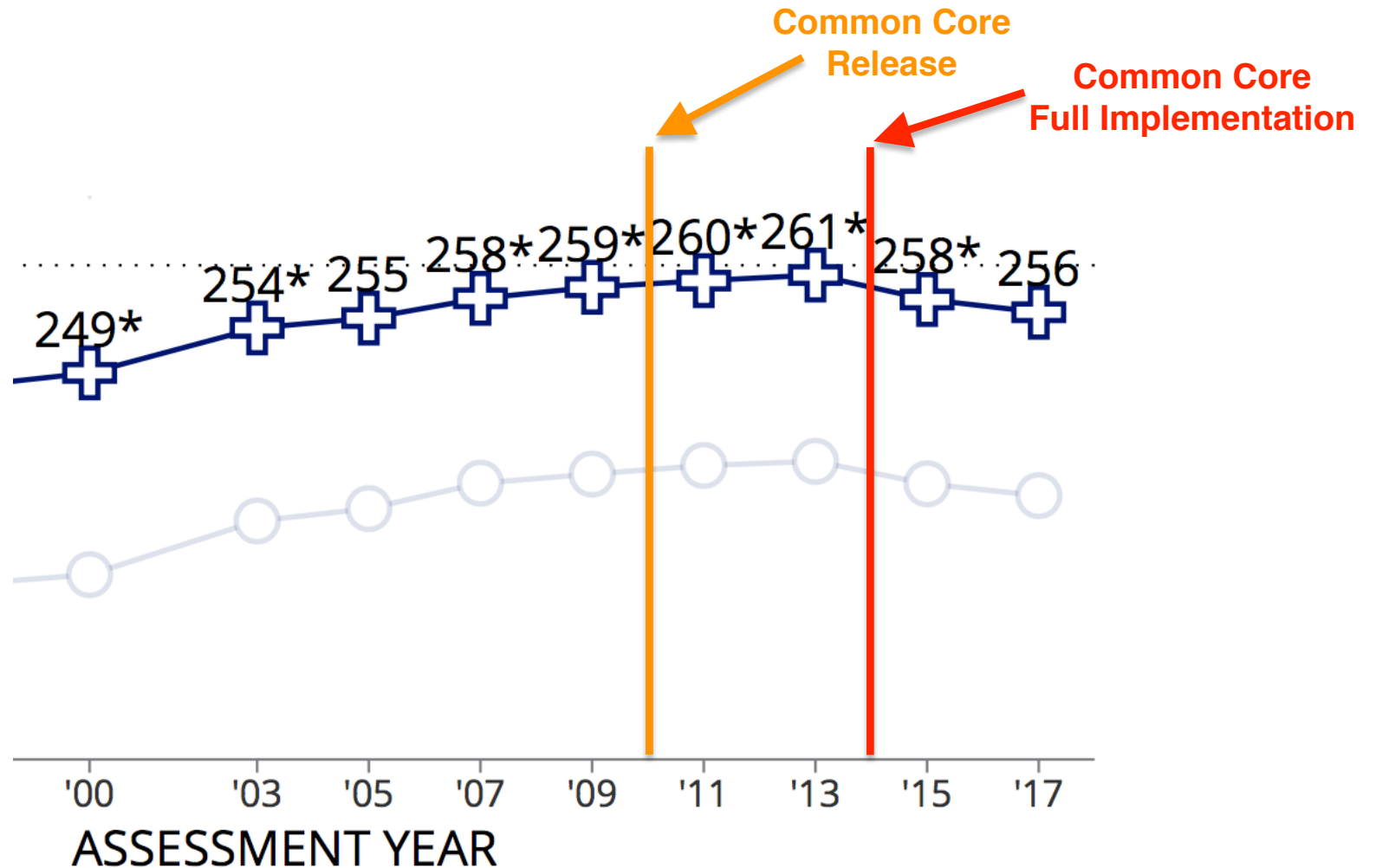


NAEP Long-Term Trend: Math 13 year olds (1978 - 2012)



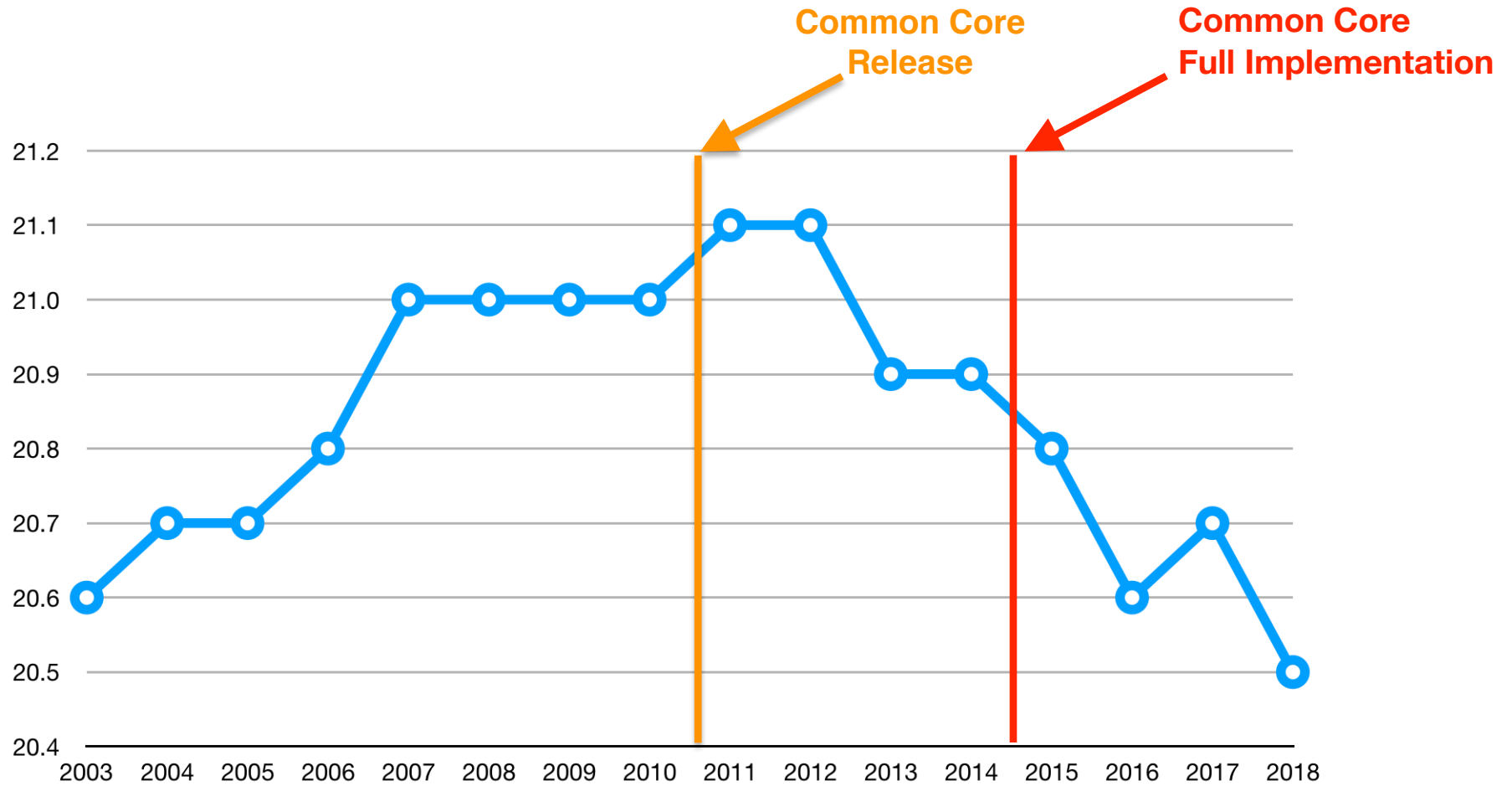
source: https://www.nationsreportcard.gov/ltr_2012/age13m.aspx

Main NAEP: Math Grade 8 (2000 - 2017) Students at 25th Percentile

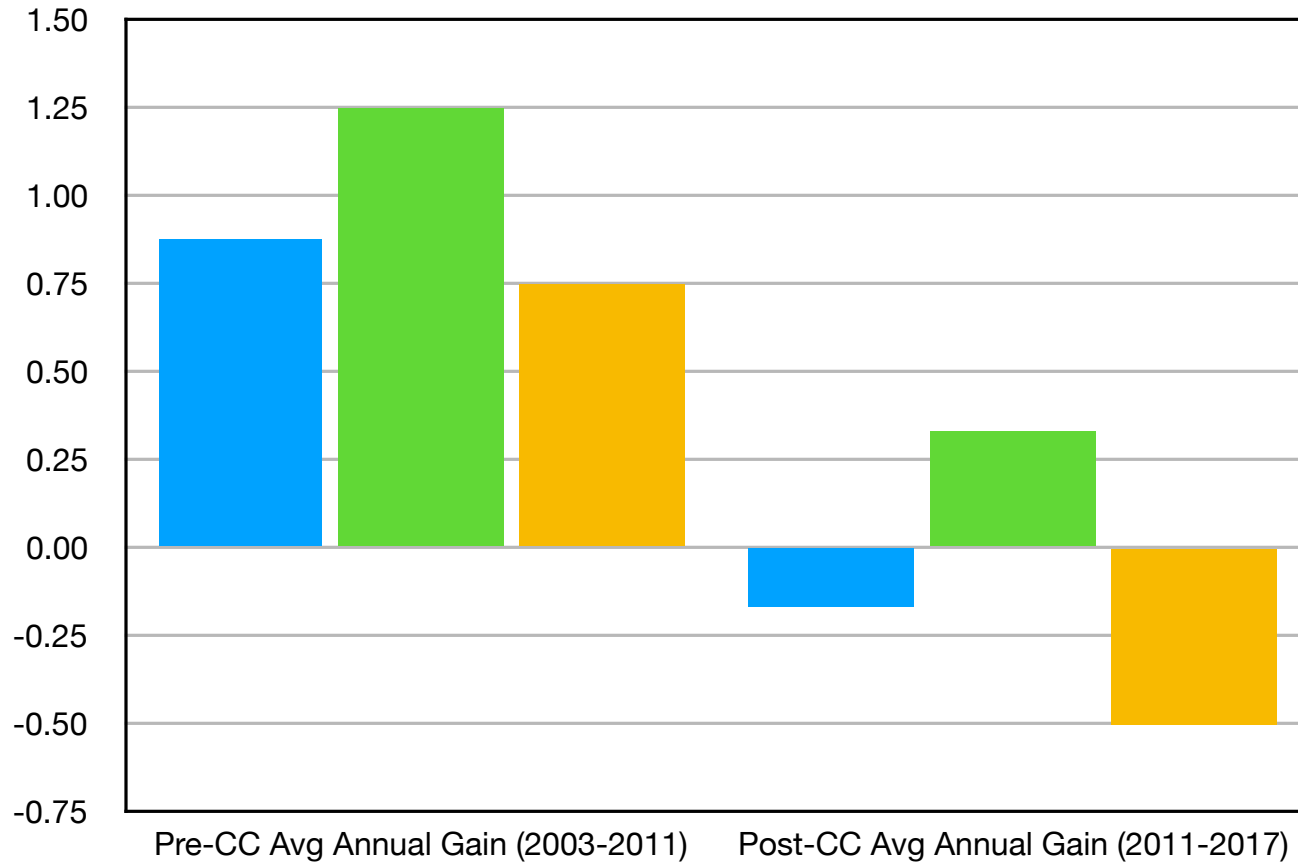


source: https://www.nationsreportcard.gov/math_2017/nation/scores?grade=8

National ACT Math Average Score



Alabama Average Annual NAEP Math Gain (G8)

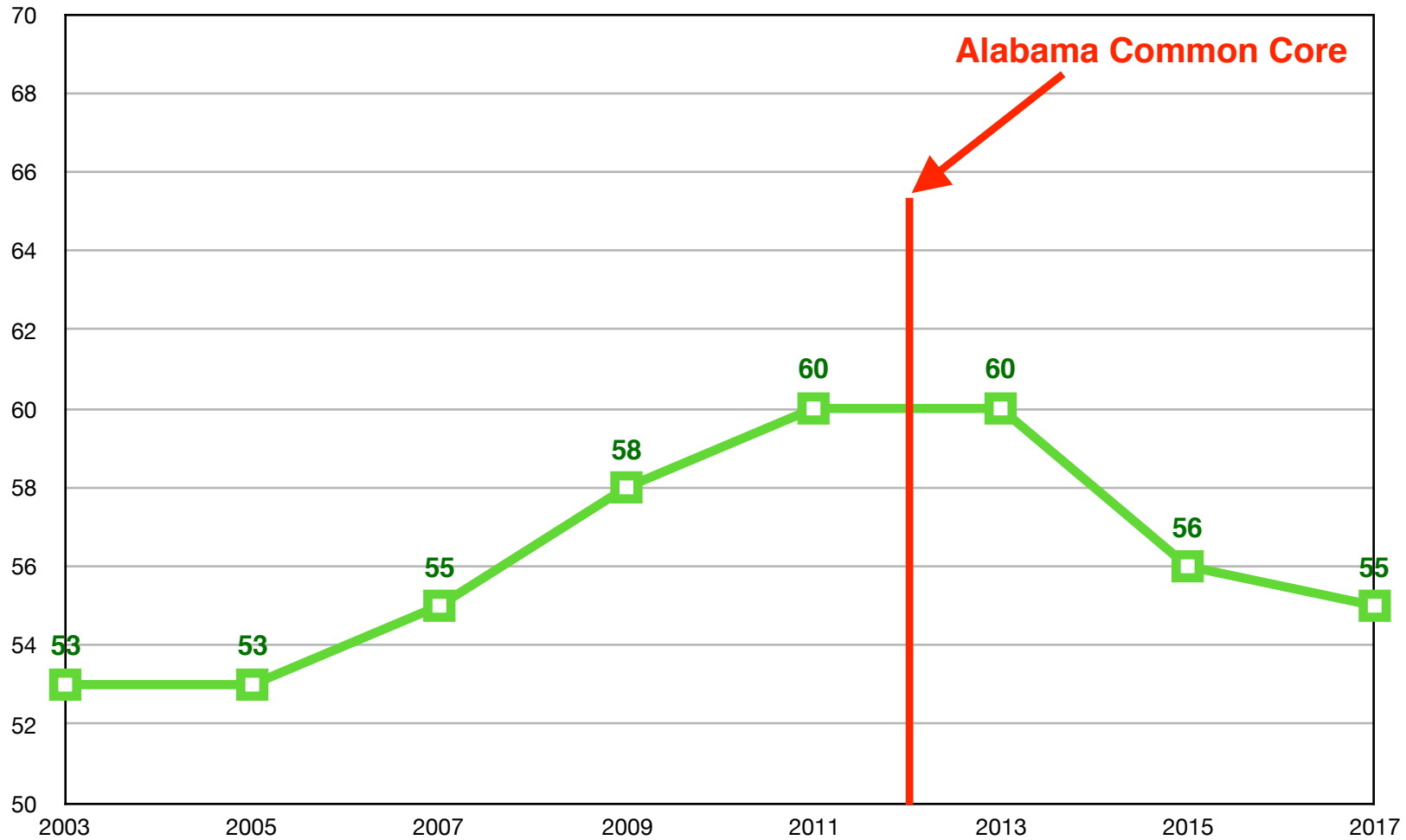


Blue = All Students

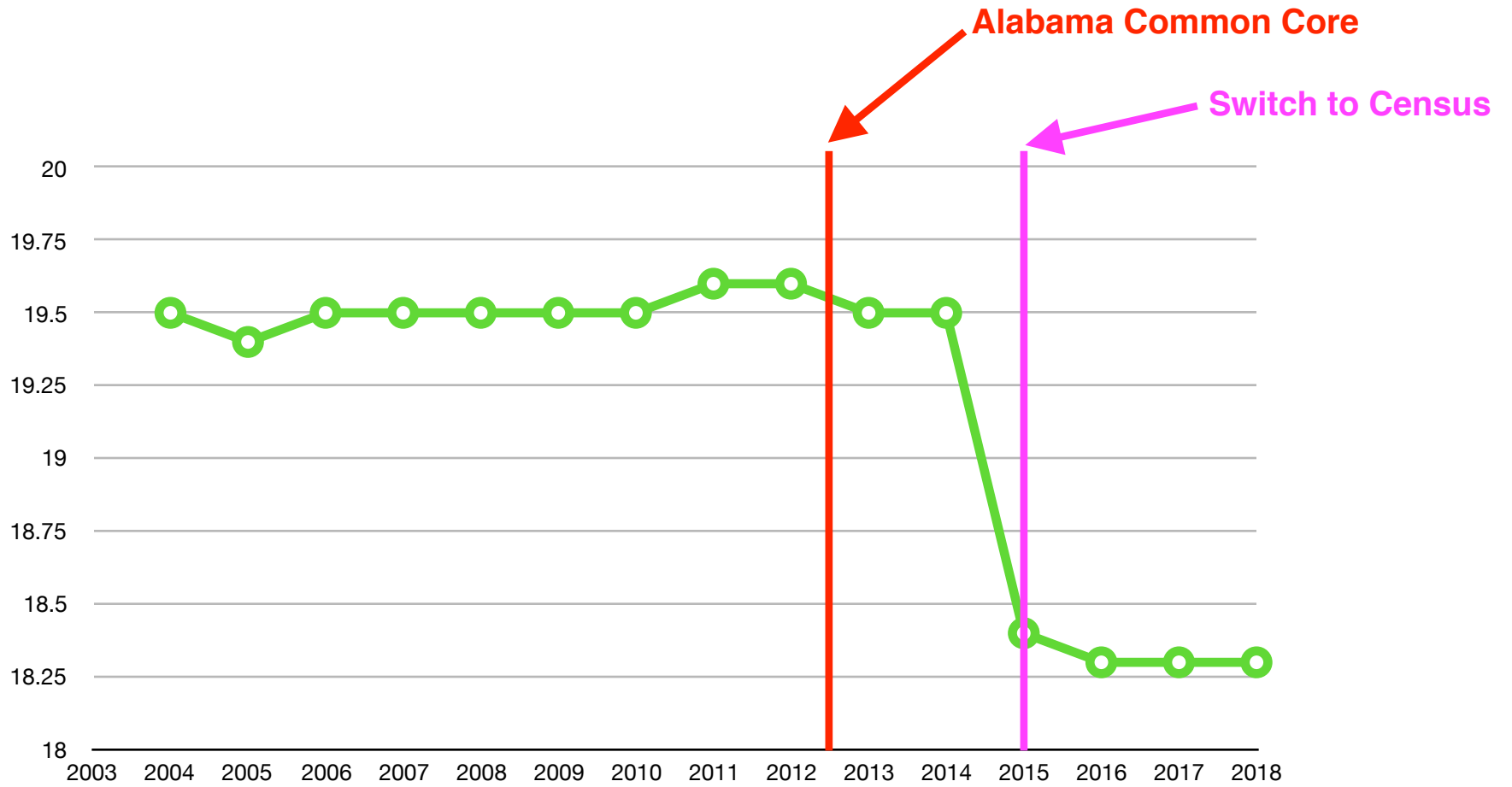
Green = African American Students

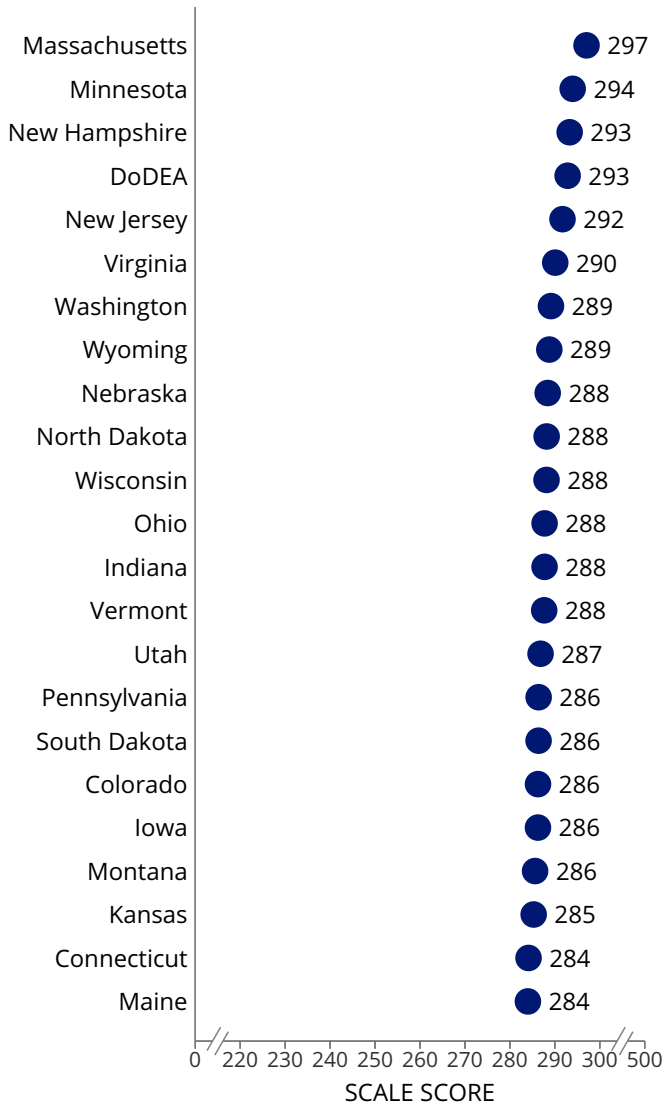
Yellow = White Students

Alabama NAEP: % of Students At or Above Basic Level in Math (G8)

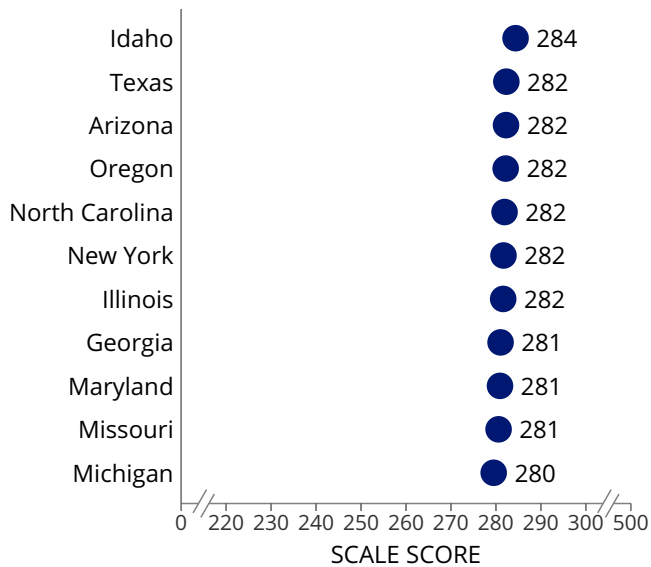


Alabama ACT Math Average Score

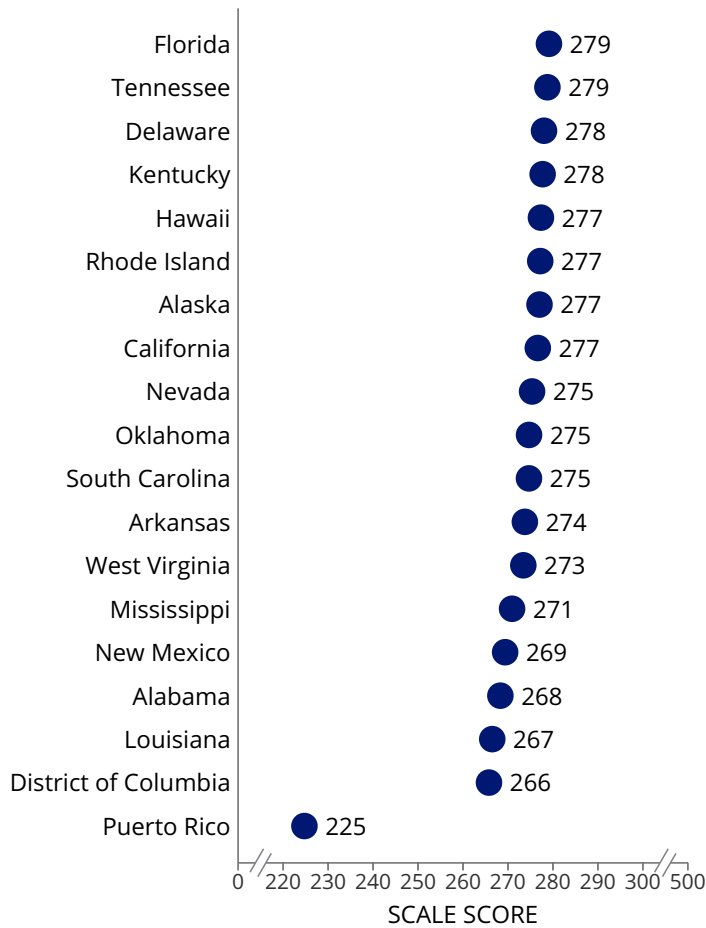




STATES/JURISDICTIONS WITH NO SIGNIFICANT SCORE DIFFERENCE FROM NATION (PUBLIC)



STATES/JURISDICTIONS WITH A LOWER SCORE THAN NATION (PUBLIC)



Related to this topic:

National Average Scores /math_2017/nation/scores?grade=8

District Average Scores /math_2017/districts/scores?grade=8

State Achievement-Level Results /math_2017/states/achievement?grade=8

Next on this page:

State Score Change Map

STATE SCORE CHANGE MAP

GRADE 4	GRADE 8
---------	---------